

BED

BOOK



Palms together, rest cheek on hands

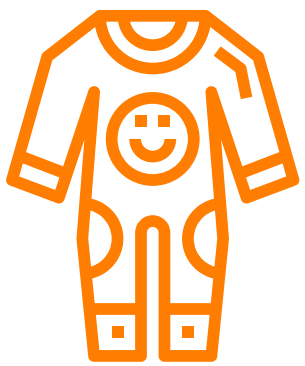


Palms together, open hands so palms face up and close again

BEDTIME SIGNS

PY JAMAS

BLANKET



Back of hand on chest, brush down to waist, flip hand and brush palm of hand up to chest



Start with fists at waist, bring up to chin

Proudly supported by:



Baby and Toddler Signing

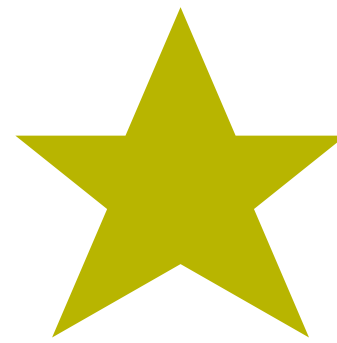


NIGHT

STAR



Open hand beside head, palm facing you, bring hand down across face in an arc

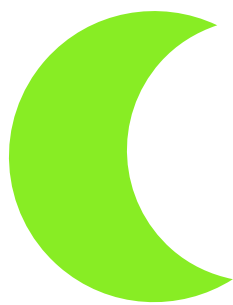


Hold middle finger with thumb then flick out

BEDTIME SIGNS

MOON

DREAM



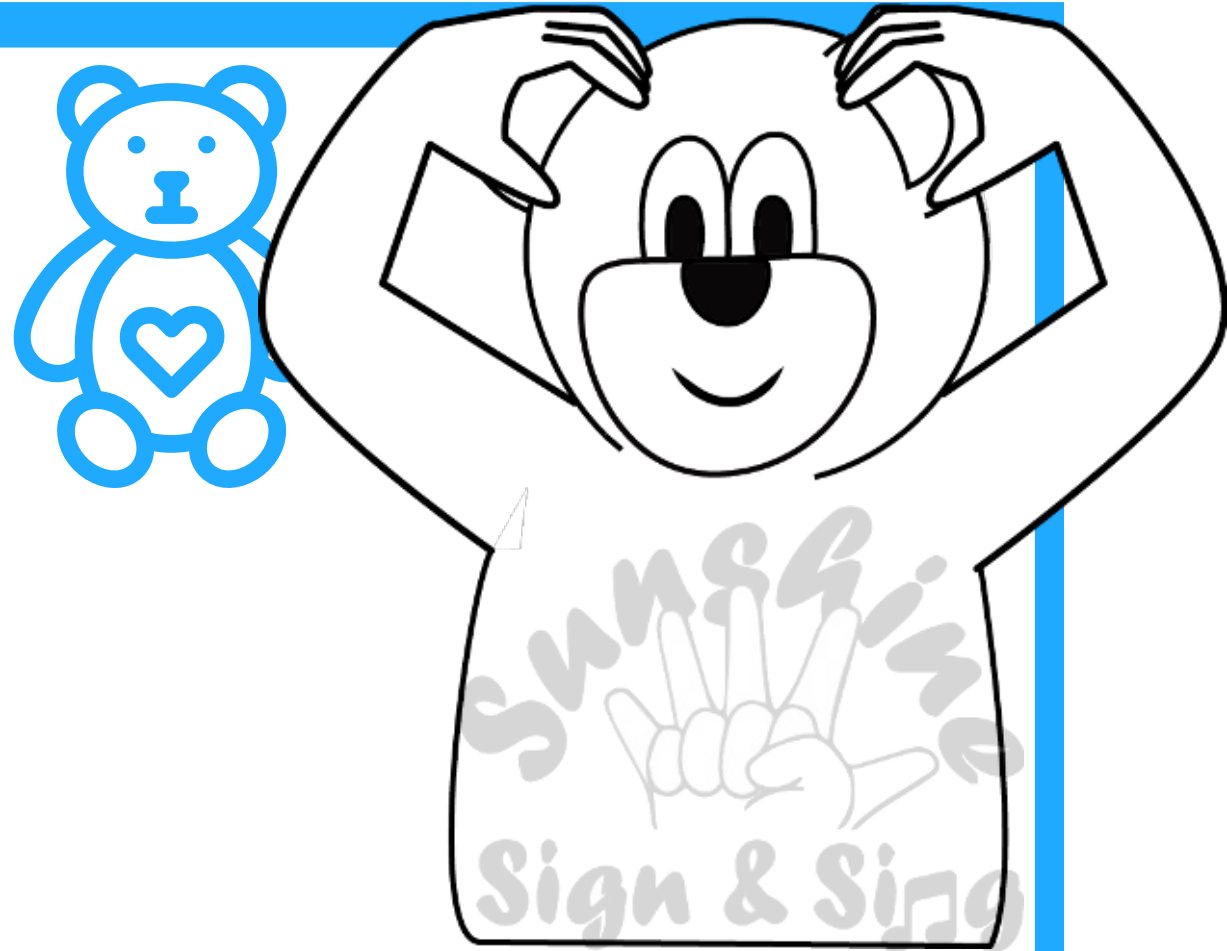
First finger and thumb pinched by head, open finger and thumb bring hand down in an outward arc ending with finger and thumb closed



Flat hand on temple draw a small circle

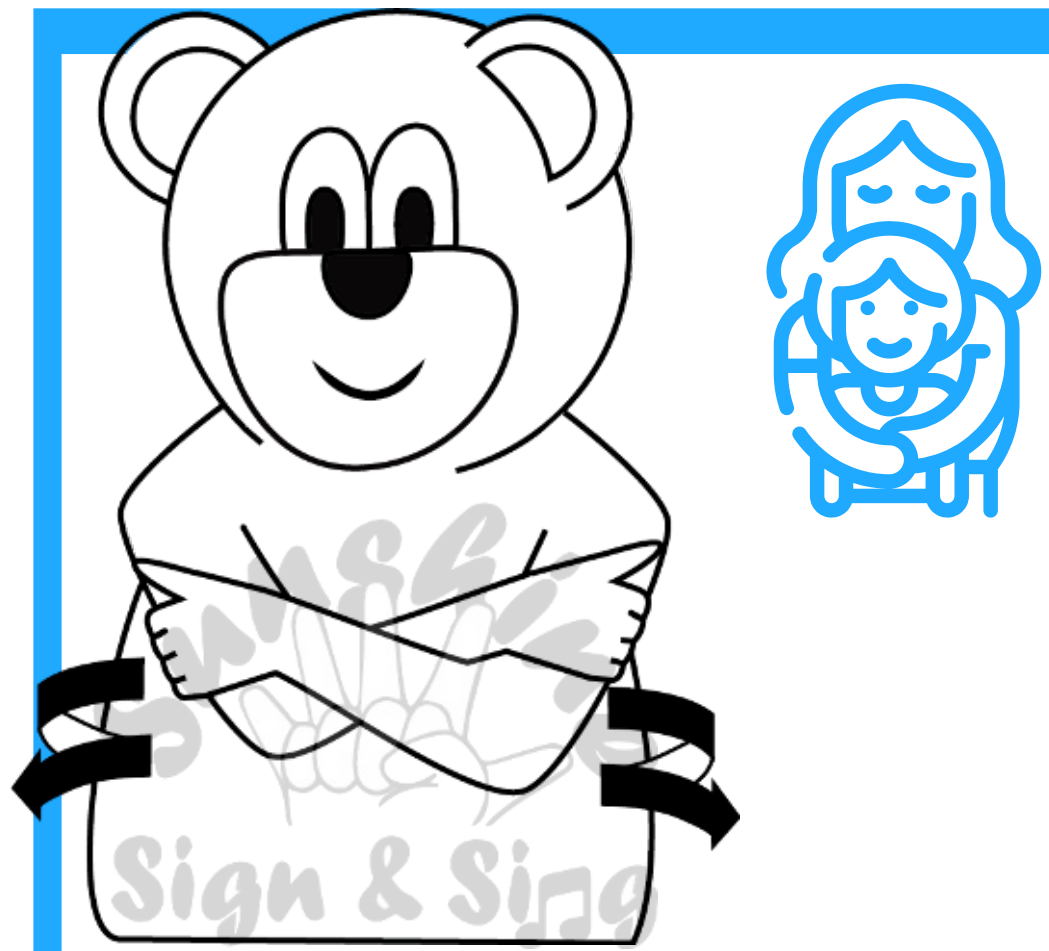


TEDDY BEAR



Place both cupped hands on head

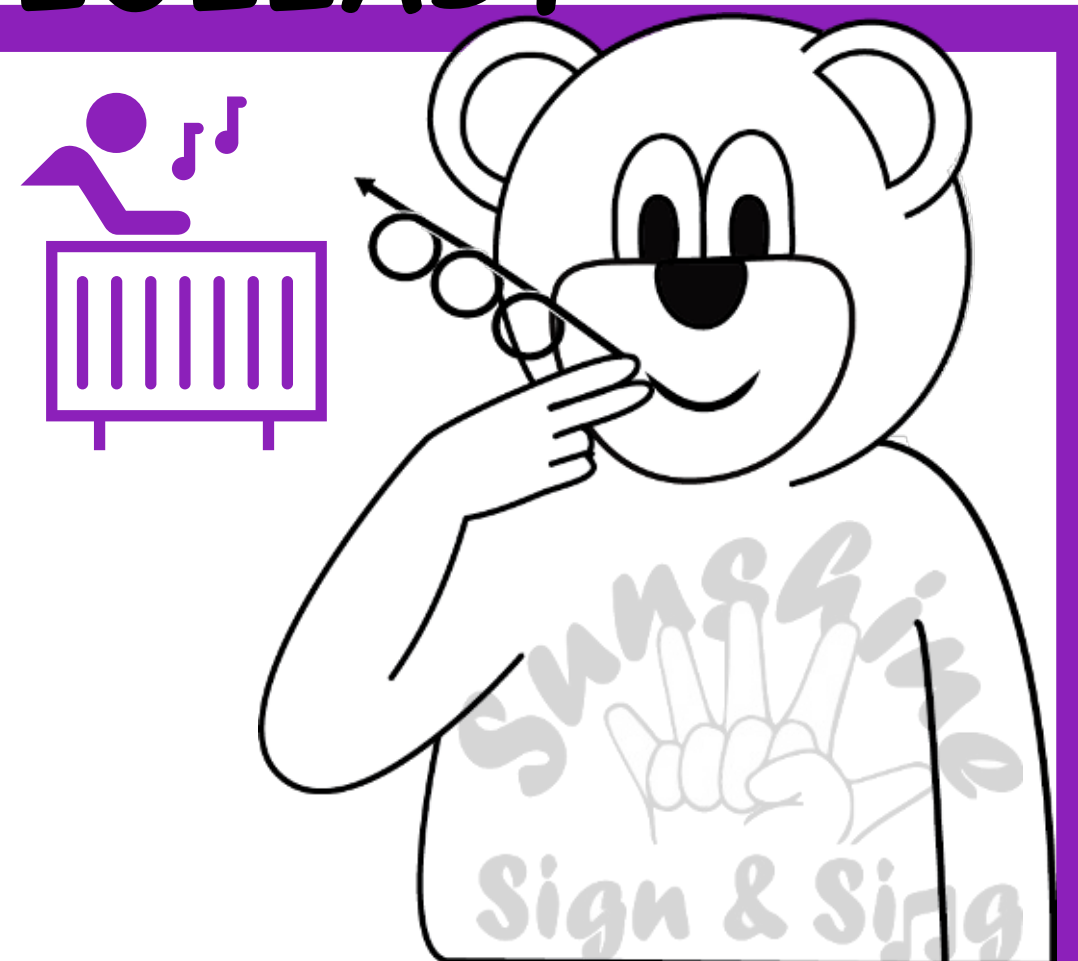
CUDDLE



With hands on opposite arms, twist left and right a few times

BEDTIME SIGNS

LULLABY



Place first and second finger near mouth, draw circles with fingers as you move hand up and out

TOOTHBRUSH



Hand in fist, thumb rests on bent first finger, shake hand in front of mouth

Proudly supported by:

harmony
by WVD Property Group

Copyright © 2020 Sunshine Sign and Sing. All Rights Reserved

Baby and toddler
signing

