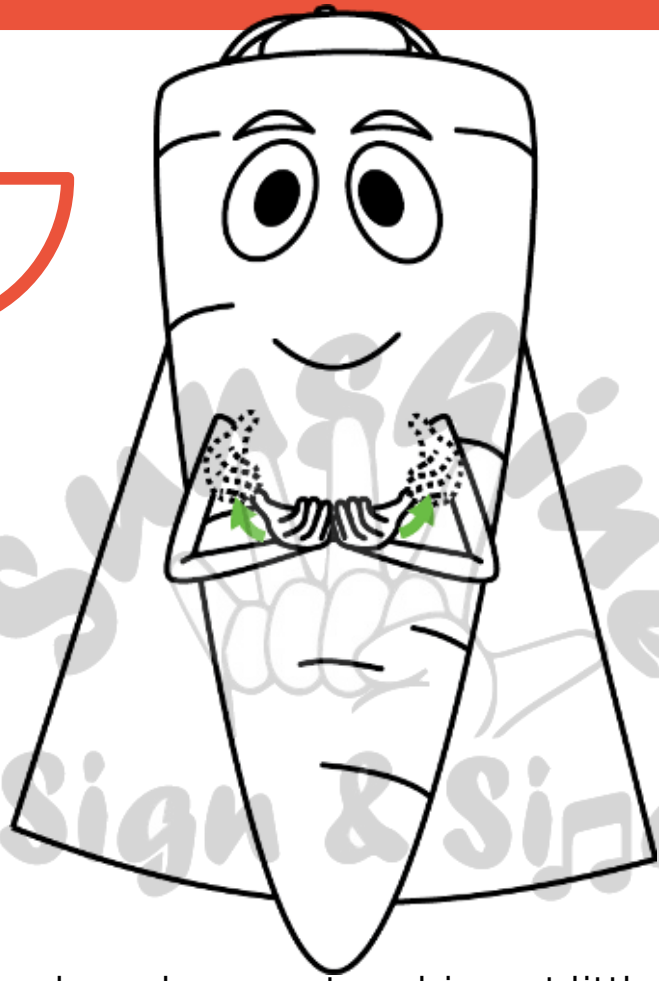
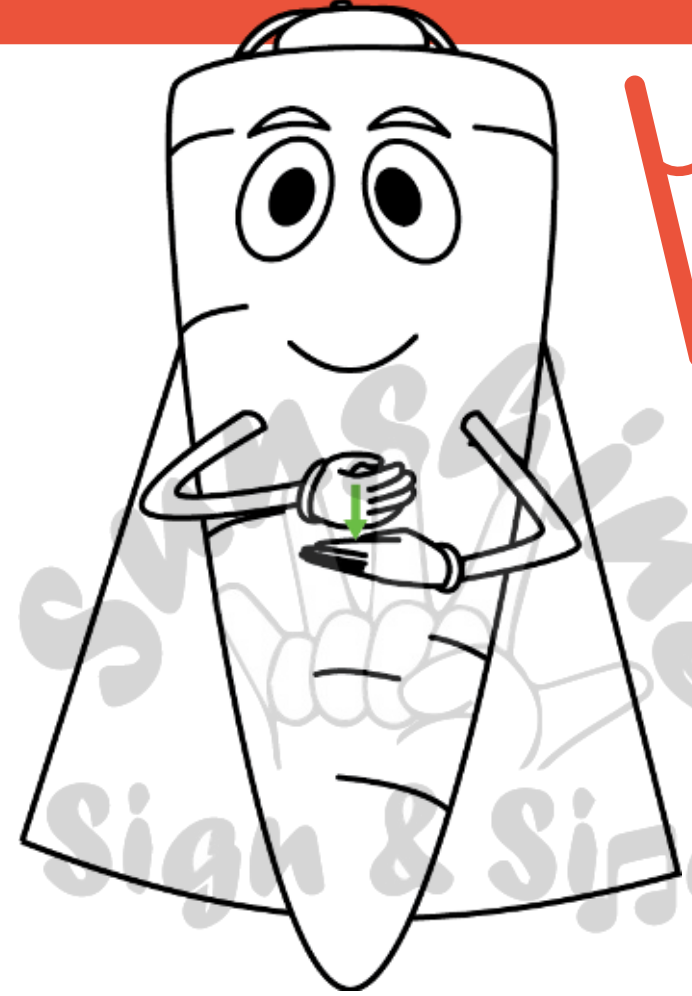


BOWL

CUP



Cupped hands, palms up, touching at little fingers, bring knuckles up and out in an arc



Place cupped hand on open flat hand

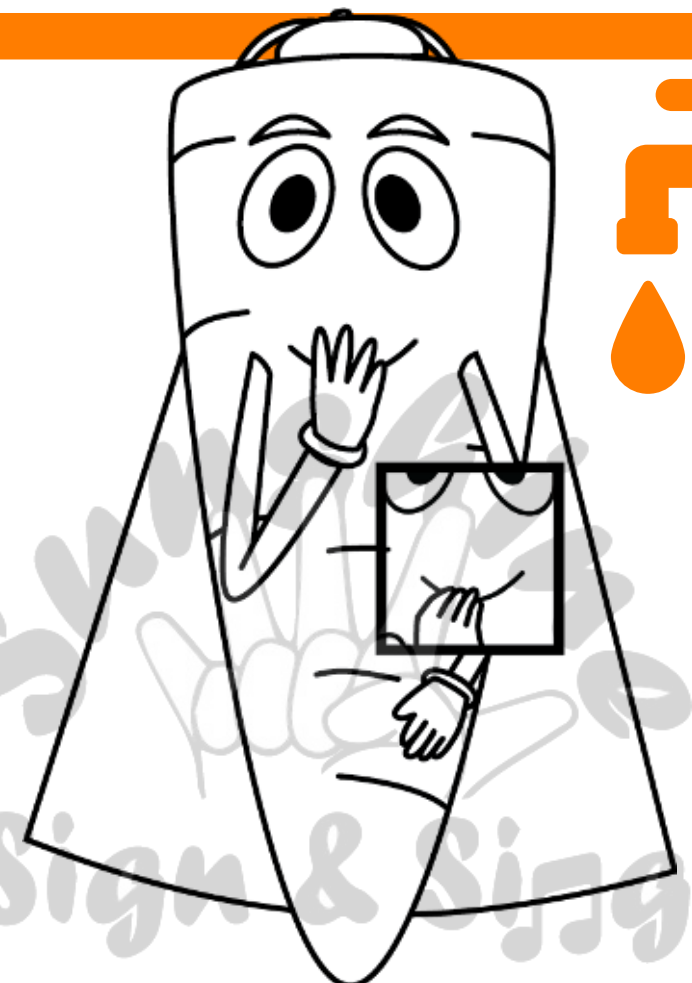
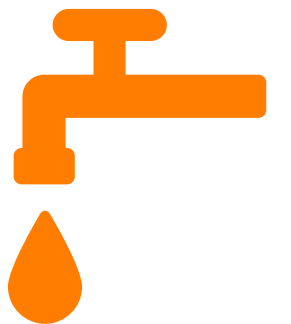
FOOD AND DRINK SIGNS

SPOON

WATER



First and second fingers extended, draw circle up towards mouth



With fingers near mouth, tap fingers on thumb twice

Proudly supported by:

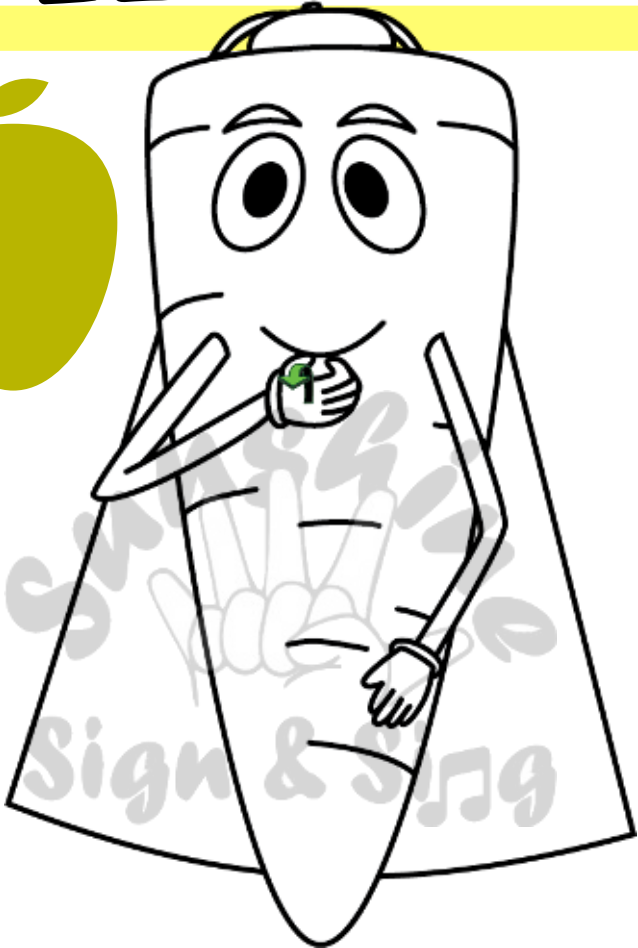
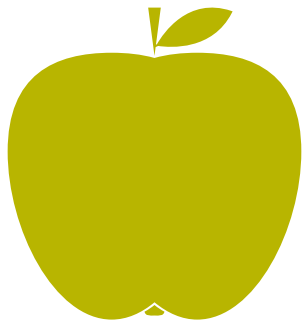


Baby and Toddler Signing

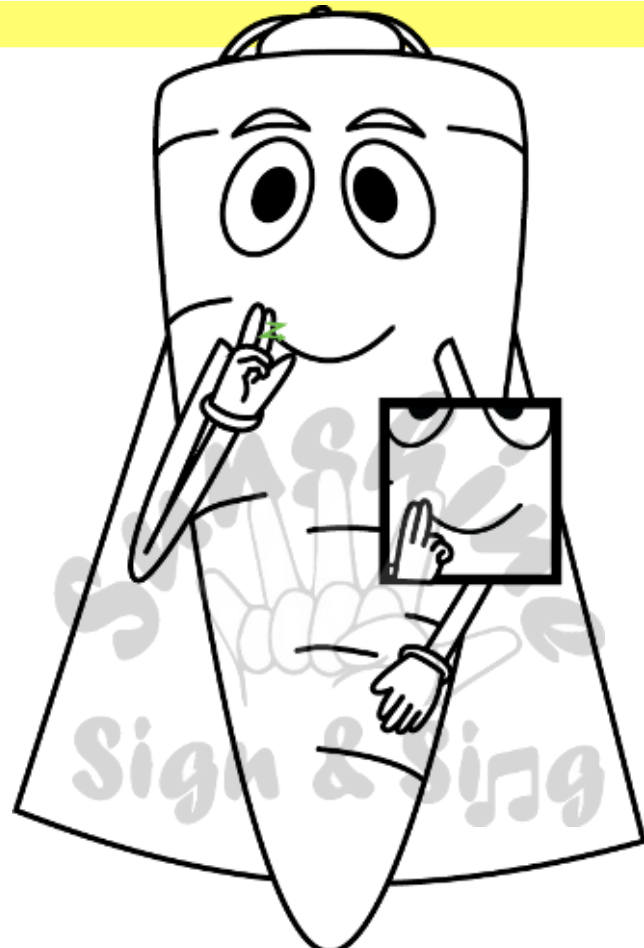
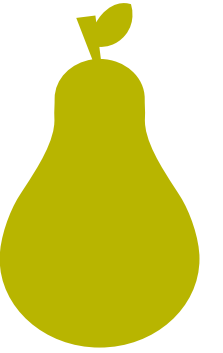


APPLE

PEAR



Cupped hand, palm facing mouth, twist hand so palm faces up

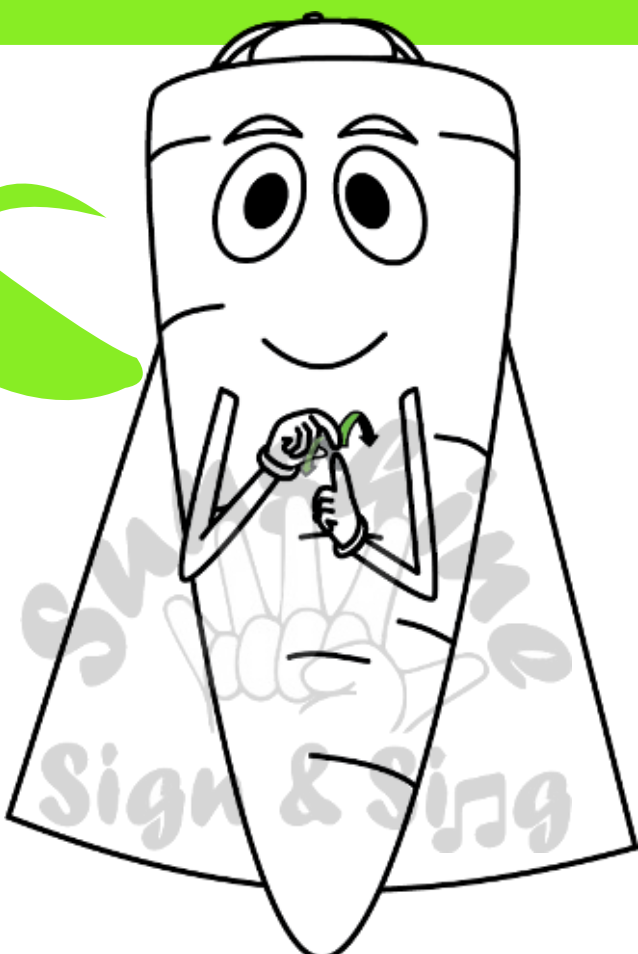


Place first and second finger near side of mouth and twist

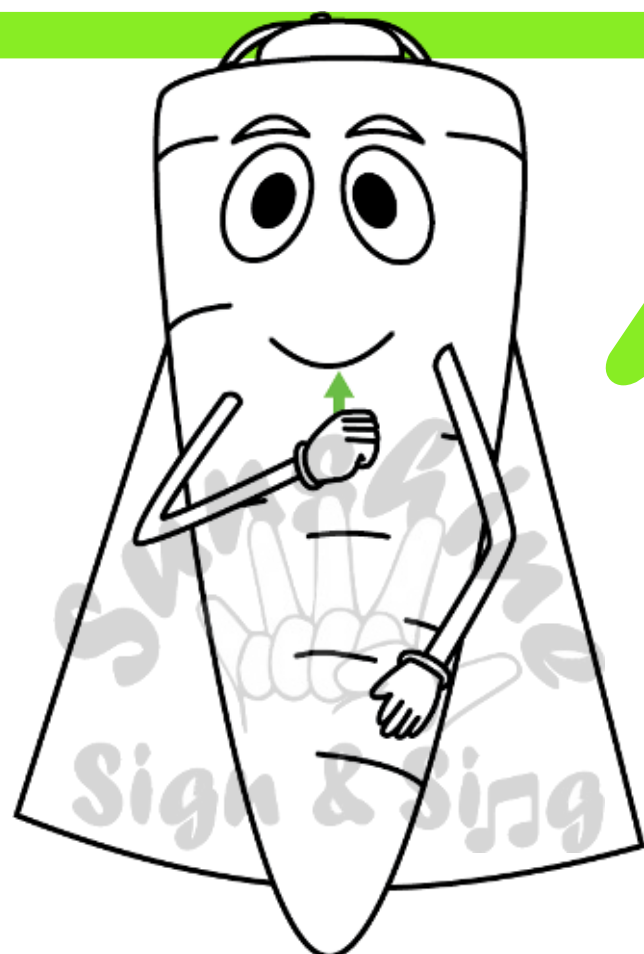
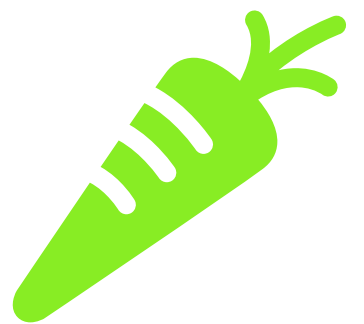
FOOD AND DRINK SIGNS

BANANA

CARROT



Point first finger upwards, use other pinched thumb and finger to tap fingertip then wrist forward and back



Bring fist slowly towards mouth

Proudly supported

harmony

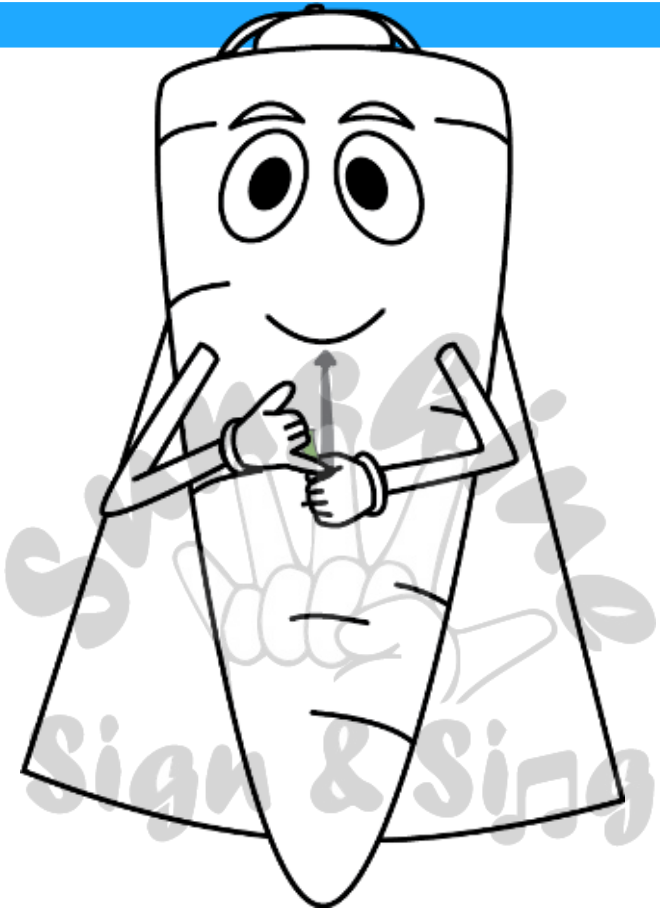
by AVID Property Group

Copyright © 2020 Sunshine Sign and Sing. All Rights Reserved

Baby and Toddler Signing



YOGURT



Form circle with one hand, place other little finger in hole then bring hand upwards

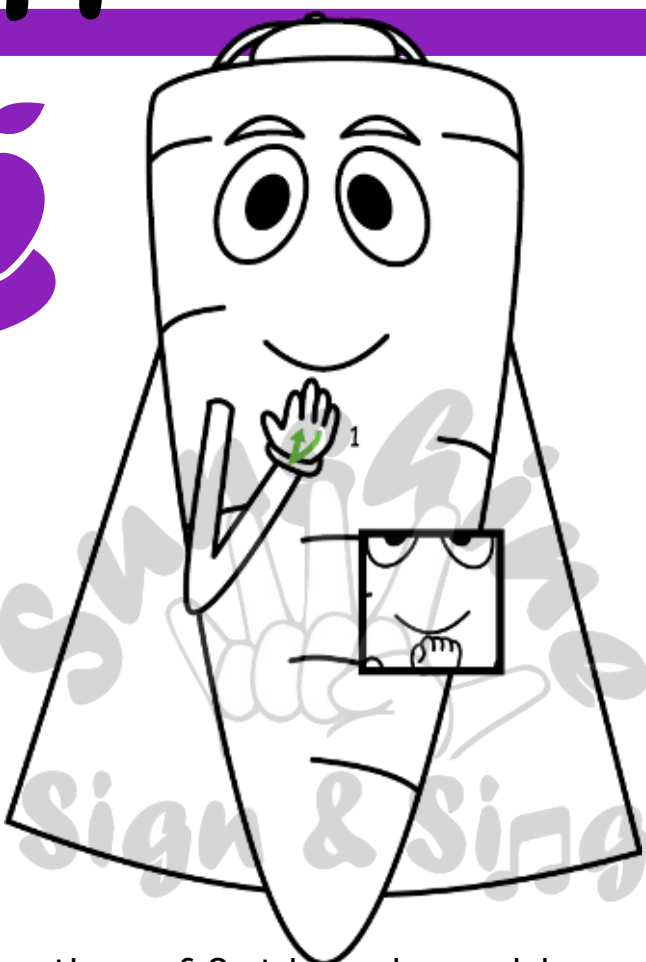
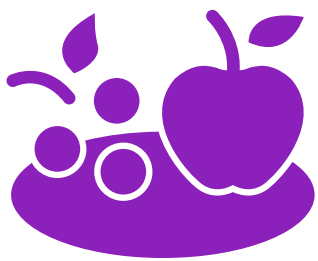
BISCUIT



Open hand, palm down, with other thumb draw circle on back of hand

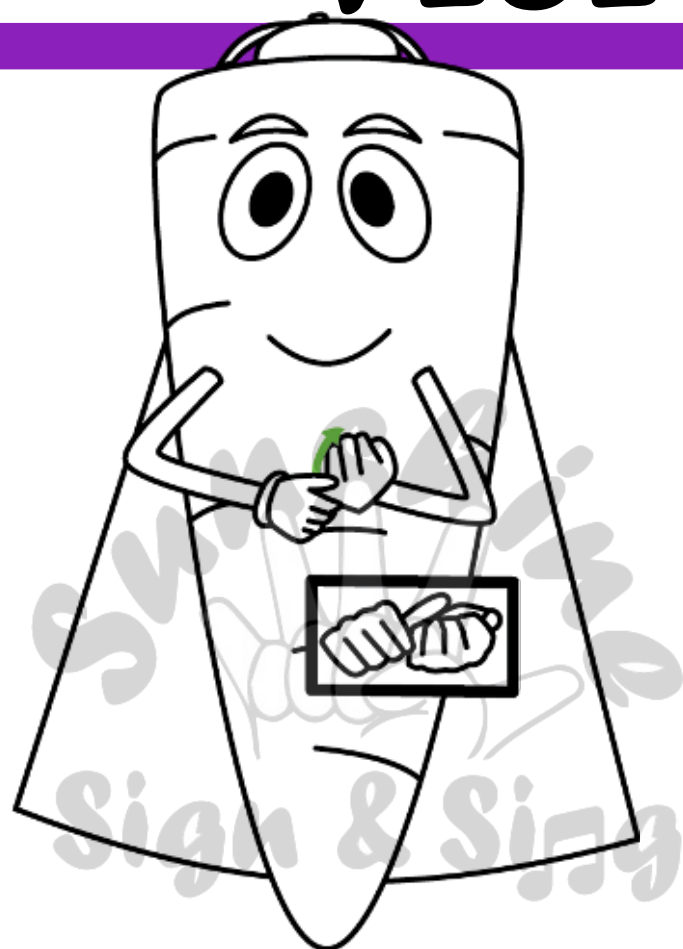
FOOD AND DRINK SIGNS

FRUIT



Fingertips of flat hand on chin, bring hand into fist and tap knuckles on chin

VEGETABLE



One hand closed fist, palm up, other hand closed fist thumb out, stroke thumb over other fingers towards you

Proudly supported by:



Copyright © 2020 Sunshine Sign and Sing. All Rights Reserved

Baby and toddler signing

