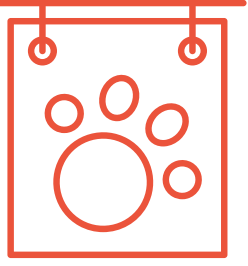
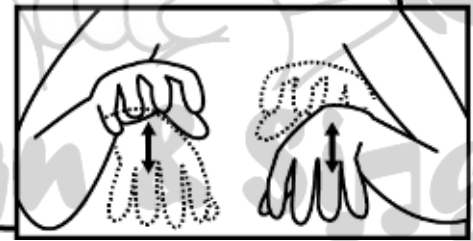
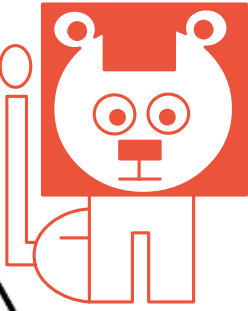
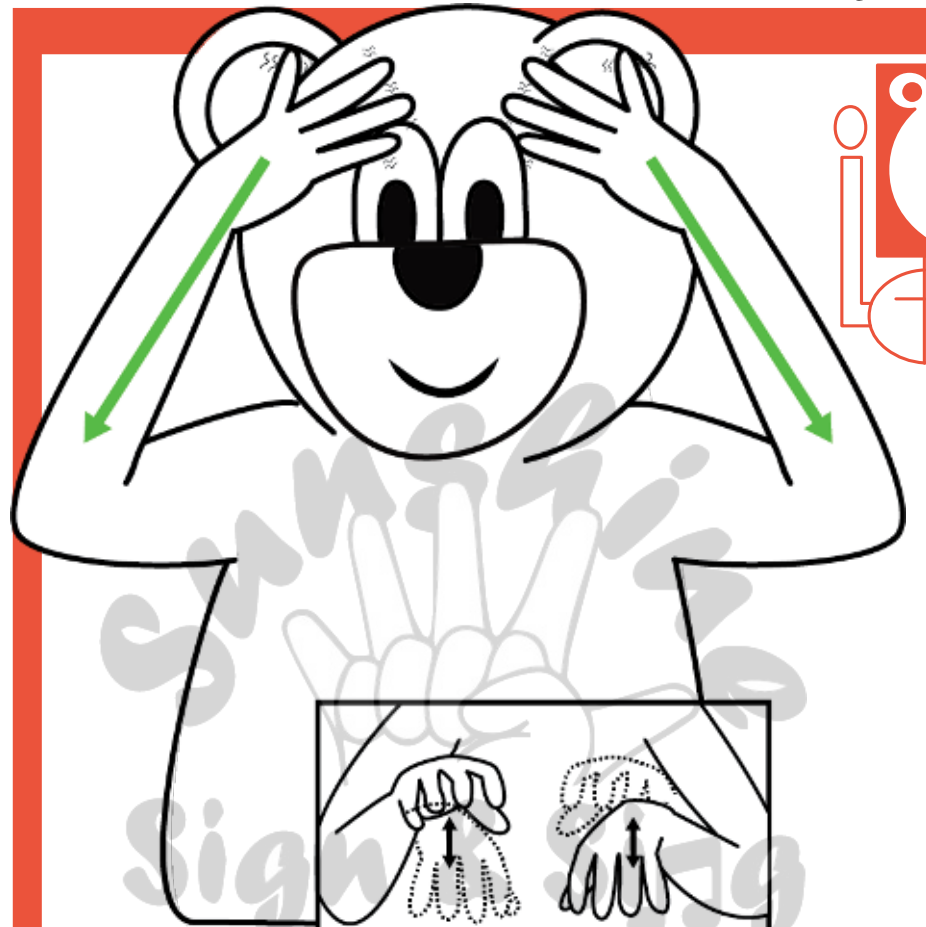


ANIMAL

LION



Touch two middle fingers to thumb leaving others extended, move hand forward

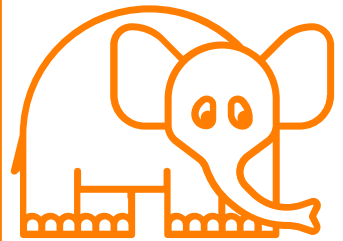


Claw alternate hands forwards then place hands on head, bring hands down to shoulders while wiggling fingers

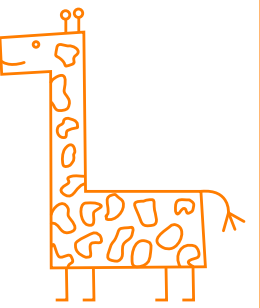
SAFARI SIGNS

ELEPHANT

GIRAFFE



Fist on nose, bring down and out



Place cupped hand at base of neck bring up and out

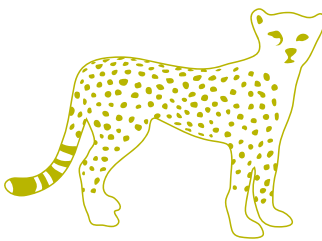
Proudly supported by:



Baby and Toddler
Signing

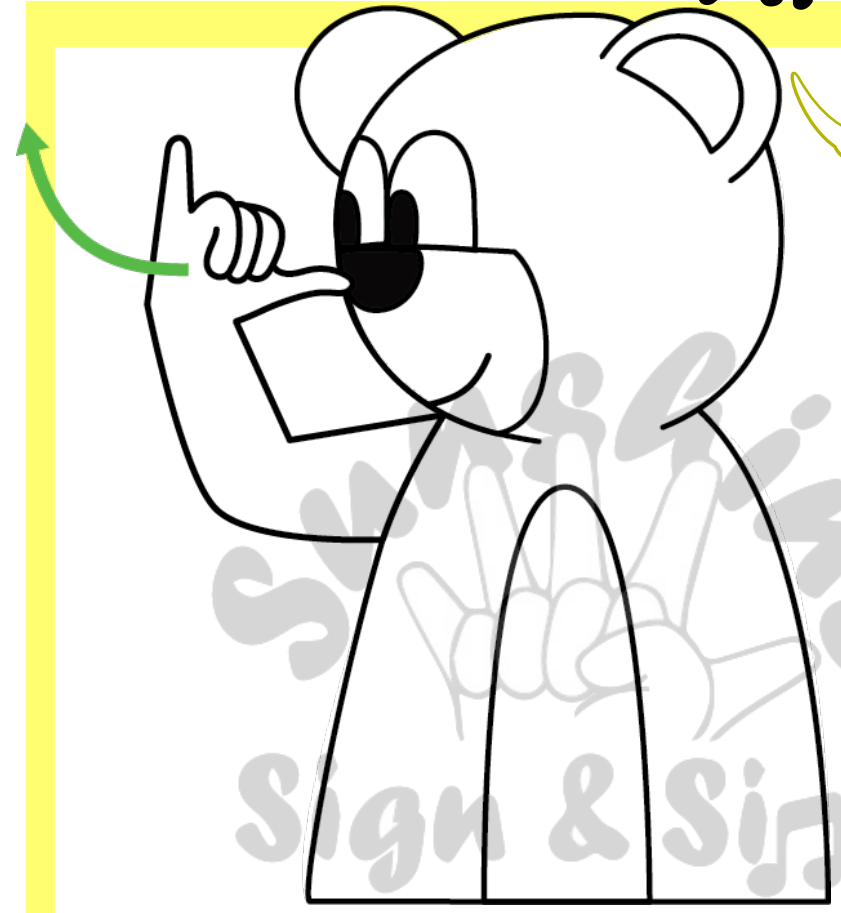
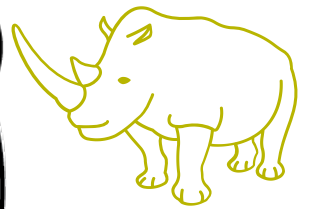


CHEETAH



Point at 'spots' on body then claw alternate hands forward

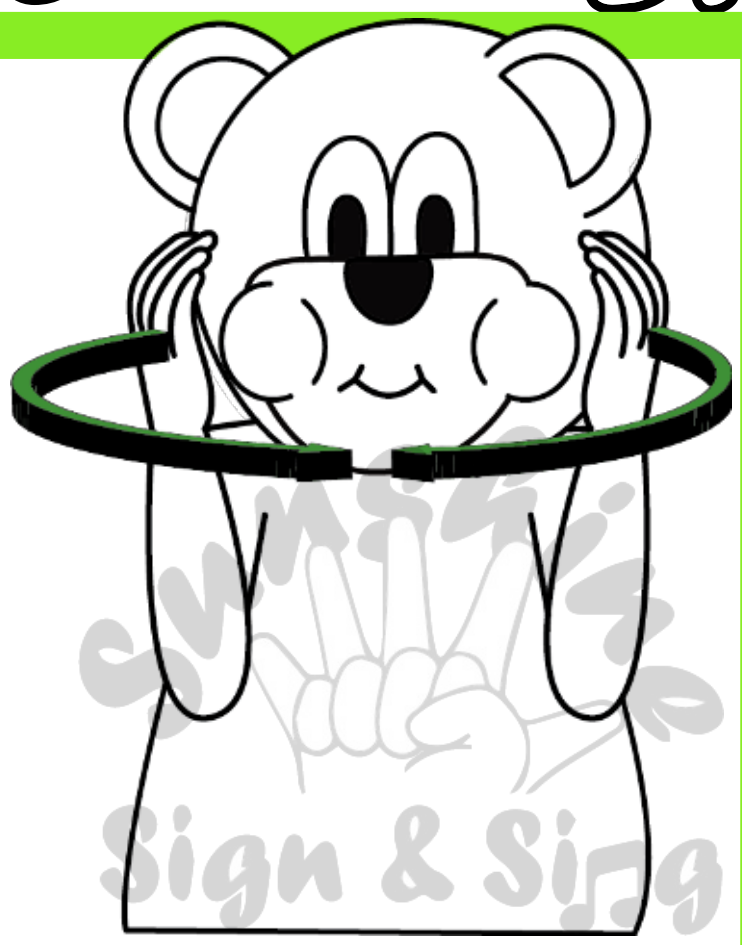
RHINO



Extend thumb and little finger from fist, place thumb on nose and bring out in upward arc

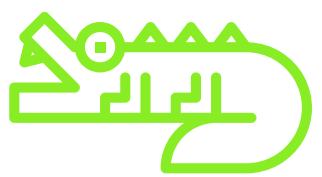
SAFARI SIGNS

HIPPO



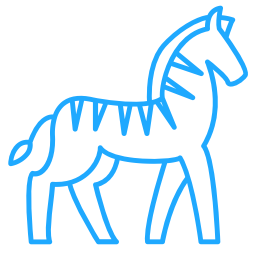
Place cupped hands in front of ears, move both hands in large outward arcs until hands meet in front of face

CROCODILE



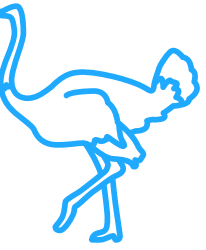
Both hands clawed, fingertips of both hands touching, raise and lower top hand twice

ZEBRA



First and second finger in a v shape, draw two lines across body

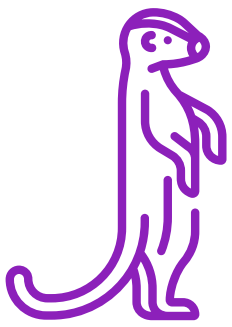
OSTRICH



Tips of thumb and fingers touching, hand out to the side of body, tip hand forward and backwards twice

SAFARI SIGNS

MEERKAT



Hands hanging in front of chest, move head quickly left and right twice

GRASS



One hand across body, palm down, move other hand behind arm wiggling fingers

Proudly supported by:

harmony
by WVD Property Group

Copyright © 2020 Sunshine Sign and Sing. All Rights Reserved

Baby and toddler
signing

